

TABLE 1 LICENCE INFORMATION

Reporting Information	
Environment Protection Licence Number	13413
Link to Full Licence	http://www.epa.nsw.gov.au/prpoeoapp/Detail.aspx?instid=13413&id=13413&option=licence&searchrange=licence&range=POEO%20licence&prp=no&status=Issued
Licensee's Name	EESI Contracting Pty Ltd
Licensee's Facility Address	Waste Science Pty Ltd Soil Recycling Facility 17 Turners Lane Cootamundra NSW 2590
Location of Monitoring Points	see map
Monitoring Frequency Required	EPL Monitoring Locations 2-4: Annually (1 sample per year) EPL Monitoring Location 5: 6-Monthly (2 samples per year for all analytes except for Heavy Metals (1 sample))

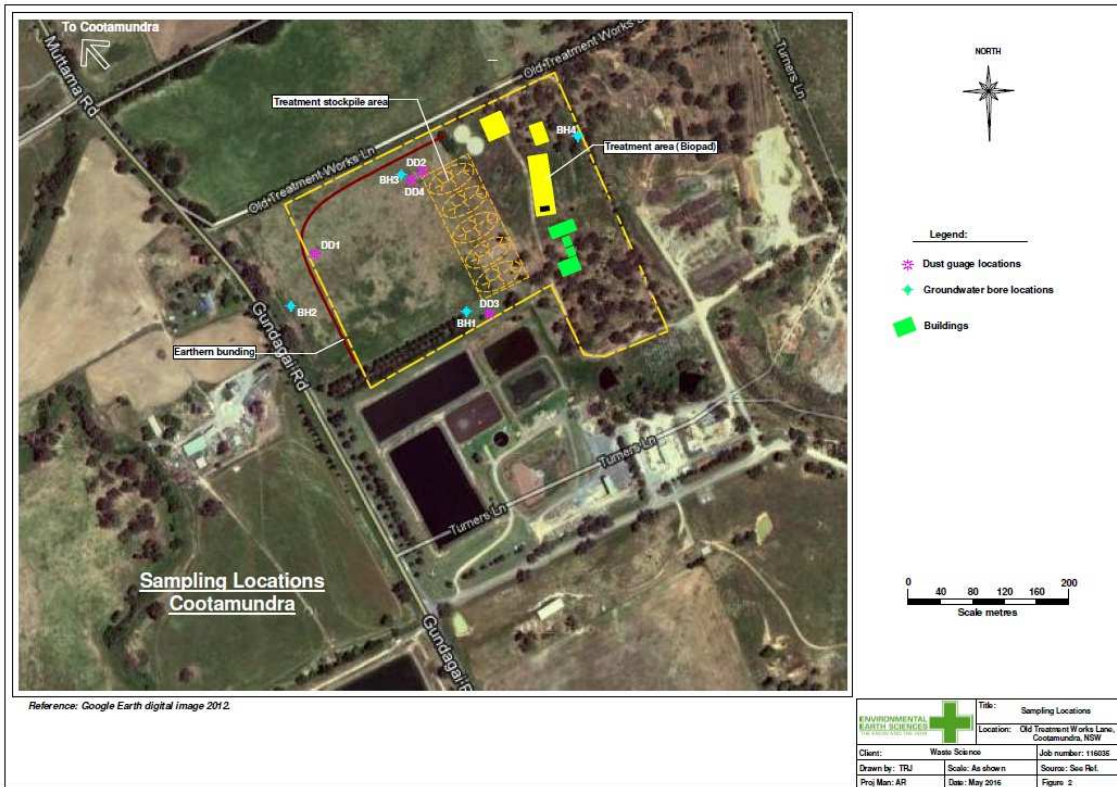


TABLE 2 EPL MONITORING LOCATION 2 – GROUNDWATER BOREHOLE BH1

Analyte	BH1					
	Monitoring Event Date	units	30/03/2016	23/03/2017	26/03/2018	05/03/2019
pH	pH	6.75	7.34	7.52	7.65	7.43
Total Phenolics / Total Phenols*	mg/L	<0.05	<0.05	<0.05	<0.05	<0.05
Total PAH	mg/L	<0.0005	<0.0005	<0.0005	<0.0005	<0.0005
Benzene	mg/L	<0.001	<0.001	<0.001	<0.001	<0.001
TRH C6-C10	mg/L	<0.02	<0.02	<0.02	<0.02	<0.02
TRH C10-C40	mg/L	<0.1	<0.1	<0.1	<0.1	<0.1
Aluminium	mg/L	<0.01	<0.01	<0.01	<0.01	<0.01
Arsenic	mg/L	<0.001	<0.001	<0.001	<0.001	<0.001
Cadmium	mg/L	<0.0001	<0.0001	<0.0001	<0.0001	<0.0001
Chromium	mg/L	<0.001	<0.001	<0.001	<0.001	<0.001
Cobalt	mg/L	0.002	0.003	0.001	0.002	0.002
Copper	mg/L	0.002	0.002	0.002	0.001	0.002
Lead	mg/L	<0.001	<0.001	<0.001	<0.001	<0.001
Manganese	mg/L	0.08	0.369#	0.066	0.089	0.069
Nickel	mg/L	0.007	0.01	0.09	0.009	0.008
Selenium	mg/L	<0.01	<0.01	<0.01	<0.01	<0.01
Zinc	mg/L	<0.005	<0.005	<0.005	<0.005	<0.005
Boron	mg/L	0.26	0.24	0.27	0.25	0.18
Iron	mg/L	<0.05	<0.05	<0.05	<0.05	<0.05
Mercury	mg/L	<0.0001	-	<0.0001	<0.0001	<0.0001

- Analysis not undertaken

Sediment during sampling likely to have resulted in elevated Manganese

TABLE 3 EPL MONITORING LOCATION 3 – GROUNDWATER BOREHOLE BH2

Analyte	BH2					
	Monitoring Event Date	units	30/03/2016	23/03/2017	26/03/2018	05/03/2019
pH	pH	7.09	7.39	7.68	7.73	7.60
Total Phenolics / Total Phenols*	mg/L	<0.05	<0.05	<0.05	<0.05	<0.05
Total PAH	mg/L	<0.0005	<0.0005	<0.0005	<0.0005	<0.0005
Benzene	mg/L	<0.001	<0.001	<0.001	<0.001	<0.001
TRH C6-C10	mg/L	<0.02	<0.02	<0.02	<0.02	<0.02
TRH C10-C40	mg/L	<0.1	<0.01	<0.1	<0.1	<0.1
Aluminium	mg/L	<0.01	<0.001	<0.01	<0.01	<0.01
Arsenic	mg/L	<0.001	<0.0001	<0.001	<0.001	<0.001
Cadmium	mg/L	<0.0001	<0.001	<0.0001	<0.0001	<0.0001
Chromium	mg/L	<0.001	<0.001	<0.001	<0.001	<0.001
Cobalt	mg/L	<0.001	<0.001	<0.001	0.002	<0.001
Copper	mg/L	<0.001	<0.001	<0.001	<0.001	0.002
Lead	mg/L	<0.001	0.008	<0.001	<0.001	<0.001
Manganese	mg/L	0.016	0.003	0.020	0.232#	0.005
Nickel	mg/L	0.002	<0.01	0.003	0.007	0.004
Selenium	mg/L	<0.01	<0.005	<0.01	<0.01	<0.01
Zinc	mg/L	<0.005	0.13	<0.005	<0.005	<0.005
Boron	mg/L	0.12	<0.05	0.14	0.12	0.05
Iron	mg/L	<0.05	<0.01	<0.05	<0.05	<0.05
Mercury	mg/L	<0.0001	-	<0.0001	<0.0001	<0.0001

- Analysis not undertaken

Sediment during sampling likely to have resulted in elevated Manganese

TABLE 4 EPL MONITORING LOCATION 4 – GROUNDWATER BOREHOLE BH3

Analyte	BH3					
	Monitoring Event Date	units	30/03/2016	23/03/2017	26/03/2018	05/03/2019
pH	pH	6.83	7.12	7.52	7.49	7.29
Total Phenolics / Total Phenols*	mg/L	<0.05	<0.05	<0.05	<0.05	<0.05
Total PAH	mg/L	<0.0005	<0.0005	<0.0005	<0.0005	<0.0005
Benzene	mg/L	<0.001	<0.001	<0.001	<0.001	<0.001
TRH C6-C10	mg/L	<0.02	<0.02	<0.02	<0.02	<0.02
TRH C10-C40	mg/L	<0.1	<0.1	<0.1	<0.1	<0.1
Aluminium	mg/L	<0.01	<0.01	<0.01	<0.01	<0.01
Arsenic	mg/L	0.001	<0.001	0.001	<0.001	<0.001
Cadmium	mg/L	<0.0001	<0.0001	<0.0001	<0.0001	<0.0001
Chromium	mg/L	<0.001	<0.001	<0.001	<0.001	<0.001
Cobalt	mg/L	<0.001	<0.001	<0.001	0.014	0.001
Copper	mg/L	<0.001	<0.001	<0.001	<0.001	0.002
Lead	mg/L	<0.001	<0.001	<0.001	<0.001	<0.001
Manganese	mg/L	0.277#	0.22#	0.106	4.04#	0.550
Nickel	mg/L	0.004	0.004	0.004	0.016	0.015
Selenium	mg/L	<0.01	<0.01	<0.01	<0.01	<0.01
Zinc	mg/L	<0.005	<0.005	<0.005	<0.005	<0.005
Boron	mg/L	0.17	0.19	0.20	0.17	0.07
Iron	mg/L	<0.05	<0.05	<0.05	<0.05	<0.05
Mercury	mg/L	<0.0001	-	<0.0001	<0.0001	<0.0001

- Analysis not undertaken

Sediment during sampling likely to have resulted in elevated Manganese

TABLE 5 EPL MONITORING LOCATION 5 – GROUNDWATER BOREHOLE BH4

Analyte	BH4							
	Monitoring Event Date	units	23/03/2017	14/07/17	26/03/2018	26/09/2018	05/03/2019	16/09/2019
pH	pH	6.89	7.61	6.4	7.20	7.36	7.94	7.39
Total Phenolics / Total Phenols*	mg/L	<0.05	<0.05	<0.05	<0.05	<0.05	<0.05	<0.05
Total PAH	mg/L	<0.0005	<0.0005	<0.0005	<0.0005	<0.0005	<0.0005	<0.0005
Benzo(a)pyrene	mg/L	<0.0005	<0.0005	<0.0005	<0.0005	<0.0005	<0.0005	<0.0005
Benzene	mg/L	<0.001	2	2	<0.001	<0.001	<0.001	<0.001
TRH C6-C10	mg/L	<0.02	<0.02	<0.02	<0.02	<0.02	<0.02	<0.02^
TRH C10-C40	mg/L	<0.1	<0.1	<0.1	<0.1	<0.01	<0.01	<0.01^
Aluminium	mg/L	<0.01	<0.01	<0.01	<0.01	<0.01	<0.01	<0.01
Arsenic	mg/L	<0.001	<0.001	<0.001	<0.001	<0.001	<0.001	<0.001
Cadmium	mg/L	<0.0001	<0.0001	<0.0001	<0.0001	<0.0001	<0.0001	<0.0001
Chromium	mg/L	<0.001	<0.001	<0.001	<0.001	<0.001	<0.001	<0.001
Cobalt	mg/L	0.002	<0.001	<0.001	<0.001	<0.001	<0.001	0.002
Copper	mg/L	0.002	0.003	0.002	0.002	0.002	<0.001	0.003
Lead	mg/L	<0.001	<0.001	<0.001	<0.001	<0.001	<0.001	<0.001
Manganese	mg/L	0.52#	0.262#	0.312#	0.225#	0.536#	0.578#	2.01#
Nickel	mg/L	0.013	0.008	0.016	0.009	0.011	0.009	0.012
Selenium	mg/L	<0.01	<0.01	<0.01	<0.01	<0.01	<0.01	<0.01
Zinc	mg/L	<0.005	<0.005	<0.005	0.210	<0.005	<0.005	0.013
Boron	mg/L	0.17	0.19	0.19	0.29	0.19	0.23	0.36
Iron	mg/L	<0.05	<0.05	<0.05	<0.05	<0.05	<0.05	<0.05
Mercury	mg/L	-	<0.0001	<0.0001	<0.0001	<0.0001	<0.0001	0.0003
Cyanide	mg/L	<0.004	<0.004	<0.004	<0.004	<0.004	<0.004	<0.004

- Analysis not undertaken

^ Silica gel cleanup

Sediment during sampling likely to have resulted in elevated Manganese